

# Stories from the Other Side: How 7 Organizations Made Work-from-Anywhere Work for Everyone

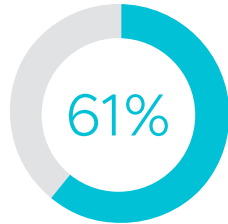


# The Rise of the Distributed Workforce

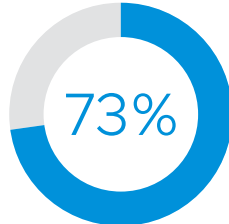
In response to the events of 2020, many organizations successfully spun up new technologies and rolled out new processes to enable their employees to stay connected and productive while working remotely. But what they didn't know—and thus couldn't prepare for—was the profound and permanent change in how and where work would be done.

After a prolonged period of working remotely, many employees have come to enjoy the flexibility and don't want to return to an office at all, or at least not 100 percent of the time. And employers also are recognizing the benefits that a distributed workforce model can deliver.

## Benefits of a Distributed Workforce Model



of IT, HR and business decision-makers agree that their organization is experiencing the benefits of remote work.<sup>1</sup>



of workers want to be able to work from home after the pandemic.<sup>2</sup>

1. VMware, Inc. "The New Remote Work Era: Trends in the Distributed Workforce. A global report analyzing organizational shifts in response to COVID19." August 2020. (Study conducted by Vanson Bourne and commissioned by VMware and Dell)

2. Verizon Media. "Microsoft survey: 73% of workers want to be able to work from home after the pandemic." Daniel Howley. March 22, 2021.

## DISTRIBUTED WORK WORKS

Fears that stay-at-home work mandates would cause productivity to plummet, teams to lose touch and morale to suffer were disproven.



# Obstacles to Distributed Workforce Success

Whether organizations are planning a 100 percent return-to-office strategy, are pivoting to 100 percent remote, or want to support a hybrid work model enabling employees to shift seamlessly between the two, ensuring a best-in-class digital employee experience also requires the intelligence needed to provide the right access to the right workers right when they need it, wherever they need it.

Many IT teams are struggling with an assortment of technologies they quickly stitched together to support what they thought was a short-term period of remote work rather than a permanent shift to a work-from-anywhere model. And they are realizing that **three key technology-related obstacles** must be overcome to support a high-functioning distributed workforce for the long term.

## 1. Suboptimal employee experience

Employers need to prioritize employee experience to attract and retain talent, which means ensuring that both knowledge and frontline workers enjoy a consistent, high-quality experience in any location using their device and operating system of choice.

## 2. Traditional security models that don't scale

Protecting a distributed organization requires the ability to extend security policies to new endpoints scattered across a broad array of locations, as well as provide visibility into all distributed apps, data, devices and networks. Zero Trust is a security approach that operates on the assumption that no device should be trusted—even if it's connected to a managed corporate network.

## 3. Operational complexity

Many organizations had to piece together a remote workforce strategy using ad hoc solutions, which created silos and tool sprawl. IT teams need integrated solutions that are actionable and automated, while broadening visibility and reducing silos and operational overhead.



---

Technology—not geography—is a key driver of employee experience and competitive differentiation in a distributed enterprise.

---

# Empower Today's Distributed Workforce with VMware Anywhere Workspace

**VMware Anywhere Workspace** is a pre-integrated solution that delivers secure and seamless experiences for distributed workforces while reducing costs and operational overhead for organizations.

It combines the key elements of unified endpoint management, desktop and app virtualization, secure access service edge, and endpoint security technologies to fully meet the needs of today's distributed workforce.

**With Anywhere Workspace, organizations can:**

## Manage Multi-Modal Employee Experiences

Put employees first with device choice, flexibility and frictionless, high-quality experiences.

## Secure the Distributed Edge

Ease the move to Zero Trust with situational intelligence and connected control points.

## Automate the Workspace

Manage to outcomes, not tasks, with intelligent compliance, workflow and performance management.

### ANYWHERE WORKSPACE COMBINES THREE KEY VMWARE TECHNOLOGIES

#### VMware Workspace ONE®

Unified endpoint management, desktop and app virtualization, endpoint security technologies, and a variety of employee experience, productivity and security-related solutions

#### VMware SASE

Zero Trust network access

#### VMware Carbon Black Cloud™

Cloud native endpoint and workload protection.

# Manage Multi-Modal Employee Experiences

**Put employees first with device choice, flexibility and frictionless, high-quality experiences.**

Meeting the needs of the distributed workforce means delivering uncompromised technology experiences for employees through remote work experiences, which can significantly improve satisfaction and help boost their productivity.

A best-in-class digital experience for employees is one that optimizes onboarding for new team members wherever they are located; provides access to all the tools, technologies and resources they need to be productive on Day 1; and offers them flexibility and choice of platforms and devices.

**VMware Anywhere Workspace** provides a comprehensive architecture that puts the employee first, driving uncompromised performance and uptime through increased network agility, delivering immersive experiences across the entire employee lifecycle. With an intelligent, automated platform that enables continuous improvement, IT teams can enable employees to work smarter and better.

## Enable touch-free IT

Deliver frictionless experiences for employees from onboarding to ongoing support—anywhere, anytime.

## Provide freedom of choice

Support knowledge and frontline employees working in any location using any device—company-owned or BYO.

## Deliver uncompromised uptime

Ensure a good application experience whether working from the office or remotely.

### VMWARE ANYWHERE WORKSPACE SOLUTION CASE STUDIES

- [Nol-Tec Systems](#)
- [Devcon](#)
- [St. John's Health](#)





# Secure the Distributed Edge

## Ease the move to Zero Trust with situational intelligence and connected control points.

Strengthening security and compliance for more effective risk mitigation in increasingly distributed work environments means changing traditional security models that do not scale. IT teams need to extend security policies to new endpoints scattered across a broad array of locations, as well as get visibility into all the distributed apps, data, devices and networks in the ecosystem. Success starts by consolidating vendors to reduce security fragmentation and silos to make Zero Trust work. The Zero Trust approach to security assumes that no device should be trusted even if it's connected to a managed corporate network.

Anywhere Workspace enables organizations to ease the move to Zero Trust through situational intelligence and connected control points by providing a holistic approach that combines endpoint security and endpoint management with network edge security.

### Embrace least privilege

Shrink the attack surface with micro-segmentation and real-time continuous authentication and authorization for access control policies.

### Leverage situational intelligence

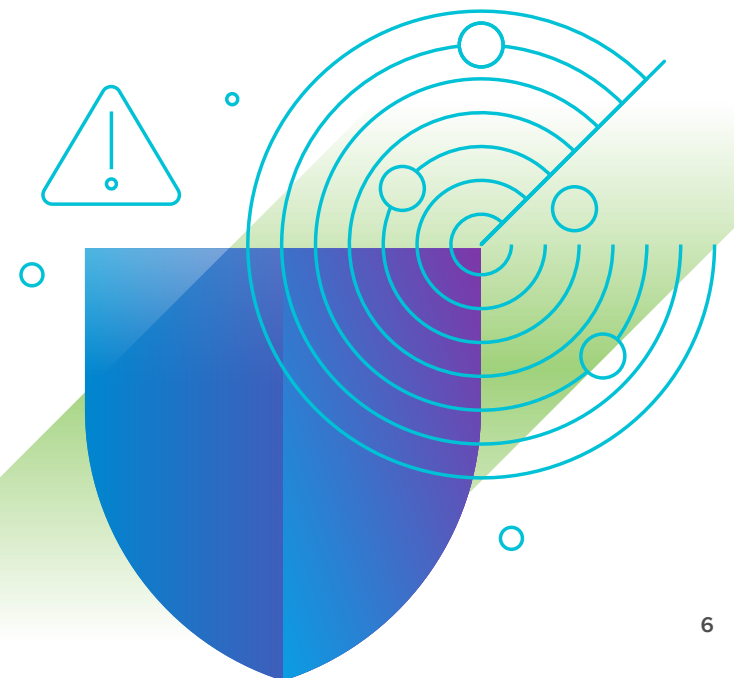
Get trustworthy, actionable and readily available environmental context and threat intelligence.

### Connect control points

Align workload, network, device and access controls to the applications and data being protected.

#### VMWARE ANYWHERE WORKSPACE SOLUTION CASE STUDIES

- [SoCura](#)
- [Preferred Mutual](#)



# Automate the Workspace

**Manage to outcomes, not tasks, with intelligent compliance, workflow and performance management.**

How can time-stretched IT teams in distributed organizations protect *and* manage networks *and* endpoints while also providing a best-in-class experience for employees? Through automation.

By automating the workspace with intelligent compliance, workflow and performance management, IT teams can manage to outcomes rather than tasks—and more easily, effectively and efficiently support distributed workforce needs. Automation significantly simplifies and streamlines protection and management of the digital workspace to save time, money and resources.

Built on industry-leading unified endpoint management, desktop and app virtualization, secure access service edge (SASE), and endpoint security technologies, the VMware automation solution is based on a convergent infrastructure that allows for connected visibility and context across all vectors. It also simplifies processes with optimized, intelligent workflows, so IT teams can reduce tools and silos, lower operational overhead, and more effectively drive business outcomes.

## Make intelligence work for you

Take advantage of unified intelligence to quickly identify, prioritize and generate automated actions.

## Deploy custom workflows with ease

Create and deploy complex workflows with drag-and-drop flexibility and speed.

## Implement cloud native visibility and management

Extend visibility and management.

### VMWARE ANYWHERE WORKSPACE SOLUTION CASE STUDIES

- [Tyler Independent School District](#)
- [Città metropolitana di Roma Capitale](#)



# Empowering Faculty and Students with Access to Learning Resources

## Challenges

The district needed to provide students and staff with the flexibility to log in to district content remotely from anywhere while operating with limited IT budget and resources.

## Solution

More than 98% of students and staff members use VMware Horizon VDI software. They can run anything from a simple web browser, all the way to a game design with Autodesk applications. Using Horizon is enabling the district to replace equipment and save money.

## Benefits

- Always-available access to district content and apps
- \$4 million savings over a 10-year period

## About Tyler ISD

As the largest school district in northeast Texas, Tyler ISD maintains a total of 36 campus and auxiliary facilities, has 2,300 employees, and serves an enrollment of more than 18,000 students. The district has two high schools, an Early College High School, Career & Technology Center, five middle schools, 17 elementary schools, two alternative schools, and one special education campus.

Watch [video 1](#).

Watch [video 2](#).



VMWARE ANYWHERE  
WORKSPACE SOLUTION:  
VMWARE HORIZON

“We’re able to create an employee-first culture at Tyler ISD by utilizing VMware software to ensure that teachers, staff, and students always have the latest, greatest software. We can deploy new software and system updates within minutes and have it deployed to the entire district, which is something that would normally take days, hours, weeks.”

JOSEPH JACKS  
CTO  
TYLER ISD



# Smart Working Policy Drives New Remote-Work Culture

## Challenges

Città metropolitana di Roma Capitale was embarking on digital transformation to eliminate the many tasks wedded to bureaucratic paper-based processes and relieve budget pressure as well as to cut Rome's traffic congestion.

## Solution

By embracing VMware Horizon, the municipality has created—for the first time—a smart working policy that enables staff to work from home one day a week.

## Benefits

- Improved productivity, collaboration, and employee work-life balance
- Reduced strain on the city's transport infrastructure

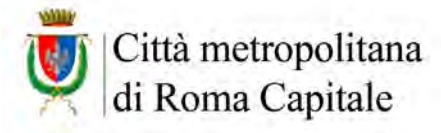
## About Città metropolitana di Roma Capitale

Città metropolitana di Roma Capitale is an area of local government in the Lazio region of Italy. Created in 2015 after the law 56/2014, it comprises the territory of the former province of Roma: the city of Rome and 121 other municipalities. With more than 4.5 million inhabitants, it is the largest metropolitan city in Italy.

Watch the [video](#).

Read the [case study](#).

Read the [blog](#).



VMWARE ANYWHERE  
WORKSPACE SOLUTION:  
VMWARE HORIZON

“Cultural change will follow. It used to be that public sector employees thought they needed to be tied to the office. We've proved that doesn't need to be the case. We feel that we're just at the beginning of a larger change.”

STEFANO IACOBUCCI  
CIO  
CITTÀ METROPOLITANA  
DI ROMA CAPITALE

# Enabling Enhanced Performance and Productivity Everywhere

## Challenges

As servers, storage, and networking equipment aged, Nol-Tec IT sought greater resiliency, flexibility, and visibility to build an agile organization that could deliver better services to the business. The company also wanted to give traveling employees more secure digital workspaces so they could better serve clients worldwide.

## Solution

By deploying VMware Cloud Foundation and VMware Workspace ONE, Nol-Tec addressed its immediate needs and gained the foundation for growth. The process systems engineering leader has found tremendous value leveraging its partnerships with Dell, VMware and CDW plus VMware Professional Services.

## About Nol-Tec Systems

Founded in 1983, Nol-Tec Systems is a global leader in process systems engineering with nearly 100 employees. Nol-Tec provides custom solutions, aligning with manufacturers, materials processors, and electrical generators to deliver the highest-quality material handling and control solutions.

Watch the [video](#).

Read the [case study](#).

## Benefits

- Deploys 7x faster—3.5 days versus 5 weeks to install separate products
- Simplifying endpoint management and improving end-user experiences



VMWARE ANYWHERE  
WORKSPACE SOLUTION:  
VMWARE CLOUD FOUNDATION  
AND VMWARE WORKSPACE ONE

“One of our most valuable results for our digital workspace transformation has been enabling remote work. Now [employees] can, in the field with a tablet or a phone, view and manipulate a 3D drawing that would otherwise require them to be at a fixed workstation. Our employees used to bring a suitcase of paper full of drawings to work sites. Now we are able to have two people across the world communicate and collaborate to get changes into the 3D drawings within a matter of hours, if not minutes.”

TONY HARMELINK  
END POINT ADMINISTRATOR  
NOL-TEC SYSTEMS

# Embodying “New Work” Through a Digital Workplace Based on Zero Trust Security

**SoCura**

## Challenges

To stay competitive in a world with heterogeneity of devices and operating systems, as well as to accommodate bring your own device (BYOD) policies, it was important to build on a modern, mobile workplace concept. SoCura wanted to provide mobile IT support that would make life easier, specifically seamless documentation of sensitive data. Because work was mostly handled on paper, employees had to go back to the office to write up all documentation. SoCura customers also needed secure access to essential data from wherever they happened to be.

## Solution

The integrated platform from Workspace One makes it easier to onboard new staff and volunteers, which in turn makes it easier to recruit young talents who expect a lot in terms of new work and IT equipment. It also eases burden on employees during their daily work, and helps save huge amounts of time. With an access app, Workspace ONE is easier to use, and improves the separation of private and professional use. Critical data can be accessed around the clock. SoCura in turn leaves welfare, church and healthcare organizations excellently equipped to advance their digitalization and able to fully rely on secure, innovative IT services.

## Benefits

- A secure and stable IT infrastructure for external customers
- Simplified onboarding and improved user satisfaction
- Easier recruiting of young talents

VMWARE ANYWHERE  
WORKSPACE SOLUTION:  
VMWARE WORKSPACE ONE

“Users now want to work with their own devices, because they know how they function. That was a major factor in the decision to adjust our strategic orientation and build on VMware Workspace ONE.”

MIKE MELCHER  
HEAD OF IT SERVICE  
SOCURA GMBH

## About SoCura

SoCura, a subsidiary of the Malteser relief agency, is a provider of accounting, IT and personnel services for organizations in the welfare, church and healthcare space.

Read the [case study](#).

# Providing World-Class Patient Care from Any Device, Anywhere

## Challenges

St. John's Health operated legacy technology that was disjointed and negatively affected the employee and patient experience. Nurses had to log in to as many as four legacy systems, and there were no workstations in patient rooms to update charts. Physicians and other caregivers lacked a single point of remote access entry to all applications.

## Solution

The healthcare provider adopted VMware Workspace ONE to put employees first. It allows staff to access critical applications and information from anywhere, helping physicians, nurses and other staff spend more time working with patients and less time worrying about technology.

## Benefits

- Improved patient outcomes
- Healthy work-life balance for caregivers

## About St. John's Health

Located in Jackson, Wyoming, St. John's Health is a regional medical system serving Teton County and surrounding counties with a team of 150 healthcare providers and 750 total staff. The facility admits approximately 1,900 patients, delivers 450 babies, performs 2,750 surgeries and handles 8,500 emergencies every year.

Watch [video 1](#). Read the [case study](#).

Watch [video 2](#).



VMWARE ANYWHERE  
WORKSPACE SOLUTION:  
VMWARE WORKSPACE ONE

“Working for the only hospital in the area, physicians have to be available whenever patients need us, even on our days off. Because I can access charts on my tablet or laptop, I can manage patient care issues while enjoying time with my family, rather than having to drive to the hospital every time someone needs my input.”

DR. MARTY TROTT  
ENT DOCTOR & MEDICAL DIRECTOR  
ST. JOHN'S HEALTH

# Easing the Remote Work Transition

## Challenges

Preferred has a staff of 300 employees. With many of them regularly working remotely, the company wanted to give all its employees the option of either using a work device or using their own home machines yet needed to ensure policies were in place to protect files transferred back and forth.

## Solution

**With VMware, the company has enabled Zero Trust and made accessing the VDI desktop from either a company-owned laptop that has the (VMware) View client installed on it as easy as from the personal desktop at home. No VPN client. No local network access. The company sees very little risk and little to no difference.**

## Benefits

- **Maximized remote employee and IT staff productivity**
- **Maintaining security over company data**

## About Preferred Mutual

Preferred Mutual Insurance Company provides property and casualty insurance coverage to more than 232,000 individual and business customers through a network of more than 500 independent agents throughout New York, New Jersey, Massachusetts and New Hampshire. In business since 1896, Preferred Mutual is rated "A" by A.M. Best Company and is headquartered in New Berlin, New York.

Watch [video 1](#).      Read [article 1](#).

Watch [video 2](#).      Read [article 2](#).



VMWARE ANYWHERE  
WORKSPACE SOLUTION:  
VMWARE WORKSPACE ONE

"Workspace ONE has been a lifesaver when it comes to managing our endpoints. It helps us address Zero Trust security by not having any data on the endpoint that the user's accessing."

BEN MOORE  
LEAD SYSTEMS ENGINEER  
PREFERRED MUTUAL



# Improving WAN Reliability While Reducing Branch Capital Costs

## Challenges

Devcon project managers and partners were experiencing poor quality of service for critical collaboration applications. Connectivity issues between team members and subcontractors also slowed large file transfers, such as blueprints, creating frustrating delays and dissatisfied users, while complicating security.

## Solution

Devcon adopted VMware SD-WAN to deliver virtualized services to remote sites with enterprise-class performance, visibility, and control. At Devcon, VMware SD-WAN is delivered over existing connections using business policy-driven templates that include built-in Quality of Service (QoS) parameters and are pre-configured for the network edge. The solution now connects everyone, over all of the company's various connection links.

## Benefits

- Enabled reliable delivery of demanding mobile construction apps
- Reduced WAN capital costs by 75%
- Reduced operating costs by 50%
- Improved worker productivity and satisfaction with collaboration apps

## About Devcon Construction

Devcon Construction, Inc. is consistently ranked among the top 100 construction companies worldwide. Since 1976, the company has built high-quality corporate campuses, data centers, education projects, green buildings, luxury hospitality venues, and sports and entertainment complexes.

Read the [case study](#).



VMWARE ANYWHERE  
WORKSPACE SOLUTION:  
VMWARE SD-WAN

"[VMware's] integrated Wi-Fi access point at the edge is great. With integrated Wi-Fi, we could deploy a wireless network that lets all remote users connect their mobile devices to the WAN. That feature alone allowed us to reduce our hardware footprint in each location."

JOE TAN  
DIRECTOR OF IT  
DEVCON CONSTRUCTION





# Choose VMware Anywhere Workspace Solutions to Empower Your Distributed Workforce

VMware Anywhere Workspace is the first and only architecture that combines the capabilities of SASE, digital workspace, and endpoint security technologies required for highly engaged and productive employees, end-to-end Zero Trust security, and simplified IT modernization.

With Anywhere Workspace, IT teams can:

- Meet employee expectations for onboarding, support and choice.
- Achieve broader, more effective security that enables access to any app from any device.
- Increase IT responsiveness and efficiency while breaking down silos, lowering IT complexity and total cost of ownership.

To learn more, visit [vmware.com/go/anywhereworkspacecapabilities](https://vmware.com/go/anywhereworkspacecapabilities).

Join us online:

